

# Pastel Shades

create a pristine and timeless appeal.

**600**  
**x600mm**

# Minimal & Timeless

Transform your space timeless with the  
minimal colors of nature



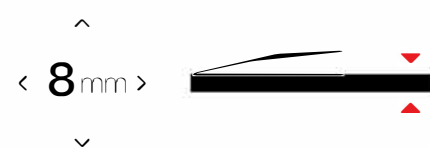
Size :

**600x600mm**

Finish :

**MATT FINISH**

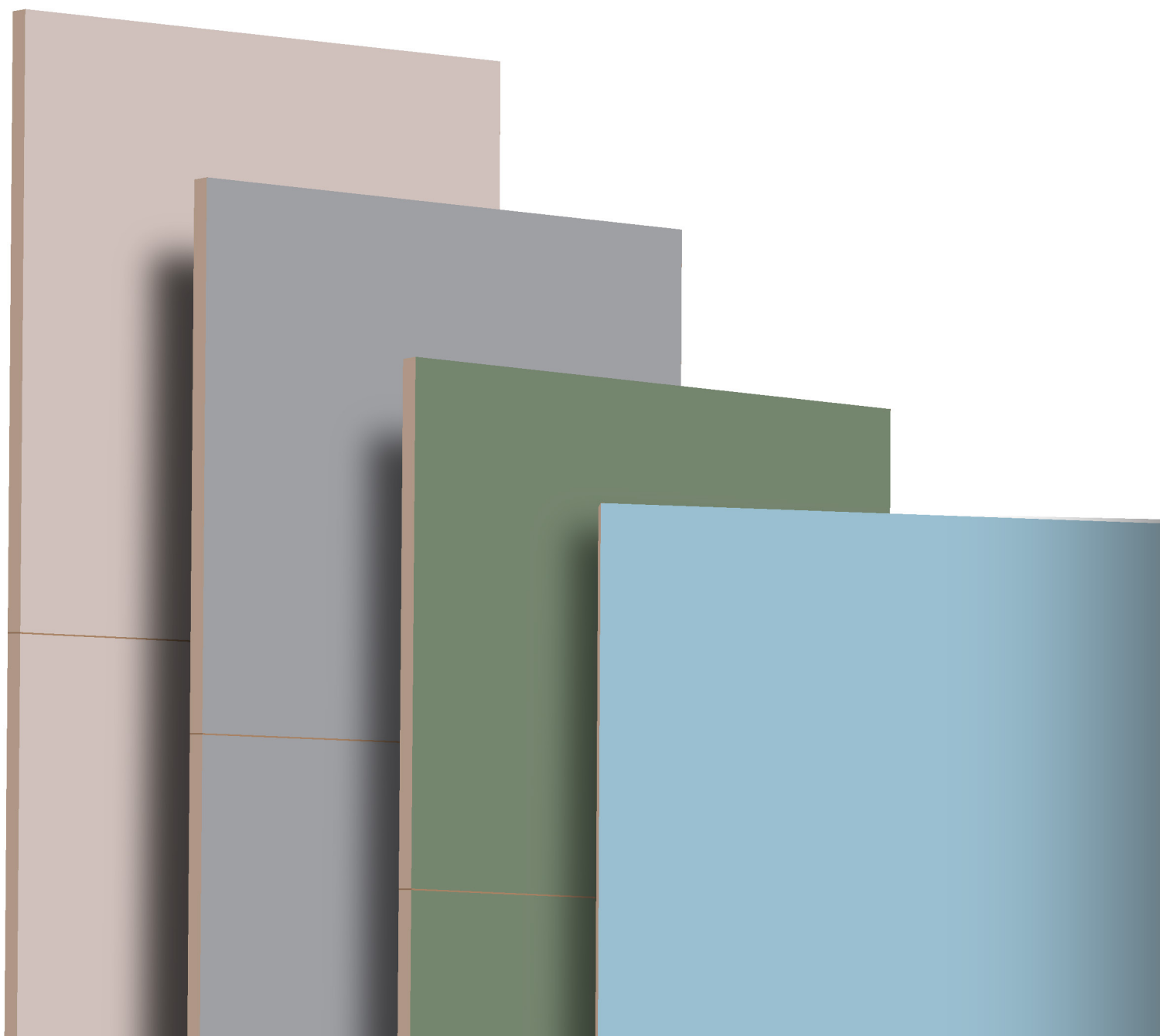
Thickness :



The pattern of this surface creates a symmetry  
that complements the ambiance and make them  
extraordinary.



Inspired by nature, these surfaces create a magnificent ambiance giving a luxurious appeal that steals the show.



AZALEAN

BLUE

CHOCO

CHARCOAL

FANTA

KOTA

GREY

HONEY

LEMON

PINK

PISTACHIO

SKY

VIOLET

# SUPERIOR FEATURES OF DIGITAL FULLBODY TILES

The SyncStone Collection features strength and resilience redefining features ideal to stand against the modern lifestyle usage and atrocities of everyday use.



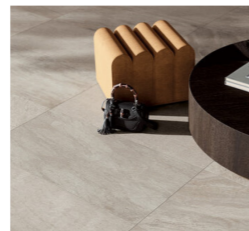
## SOLID BODY

Durable and solid body due to the homogenous fullbody composition of the tiles.



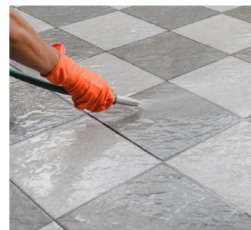
## EASY TO CLEAN

Resists stains, scratches, and more requiring effortless regular cleaning only.



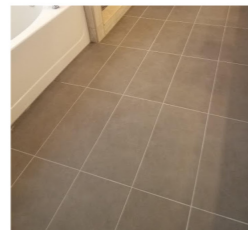
## ECOLOGICAL & SUSTAINABLE

The collection is a sustainable alternative to marble flooring making it ecological.



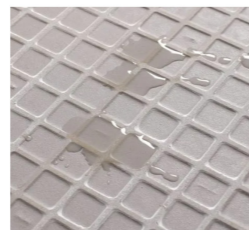
## ZERO MAINTENANCE

The surfaces are sturdy and resilient requiring no special maintenance.



## HIGH STRENGTH

The fullbody composition boasts high strength and resistance ideal for high traffic also.



## LOW WATER ABSORPTION

Exceptionally non-porous surface and revolutionary digital print make surface low water absorbing.

Explore extensive application indoors and outdoors with the aesthetic and resilient qualities of the exclusive collection.

## APPLICATION AREA



KITCHEN

LIVING ROOM



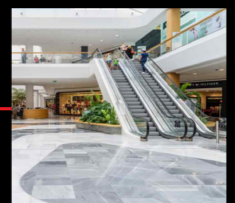
CORPORATE OFFICES

HOTEL & RESTOURANTS



BATHROOM

PUBLIC PLACE





AZALEAN

# AZALEAN

MINIMUM  
3MM SPACE  
RECOMMEND

**Prism**  
collection

Size:  
**600X  
600 MM**

Thickness :  
**8.0** 

Finish :  
**MATT FINISH**

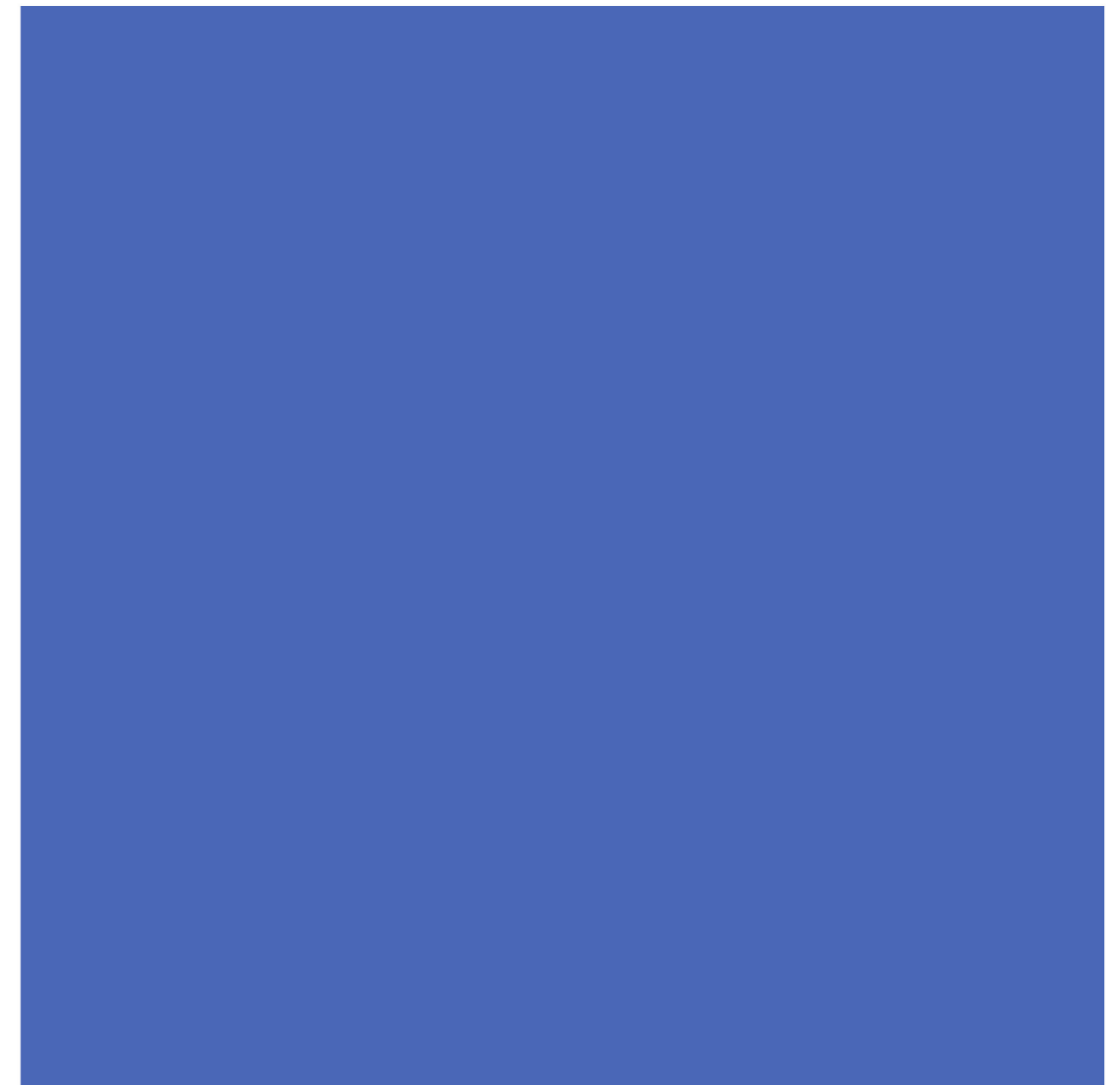




Size:  
**600X  
600 MM**

Thickness :  
**8.0** 

Finish :  
**MATT FINISH**





GREY,  
CHARCOAL & M-708



# CHARCOAL

MINIMUM  
3MM SPACE  
RECOMMEND



**Prism**  
collection

Size:  
**600X  
600 MM**

Thickness :

**8.0**

Finish :  
**MATT FINISH**

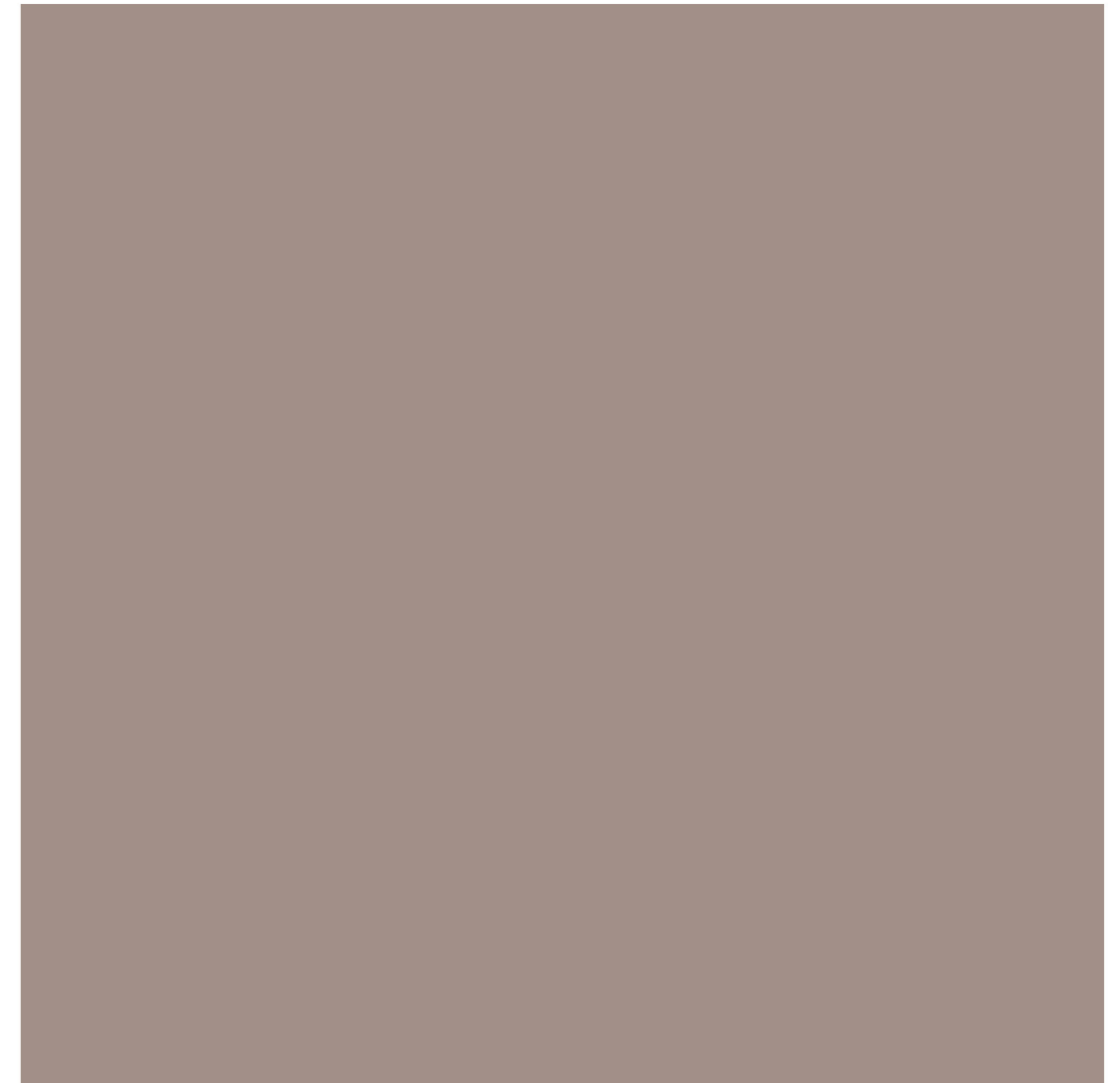




Size:  
**600X  
600 MM**

Thickness :  
**8.0** 

Finish :  
**MATT FINISH**



# FANTA

MINIMUM  
3MM SPACE  
RECOMMEND

**Prism**  
collection

Size:  
**600X  
600 MM**

Thickness :

**8.0**



Finish :  
**MATT FINISH**



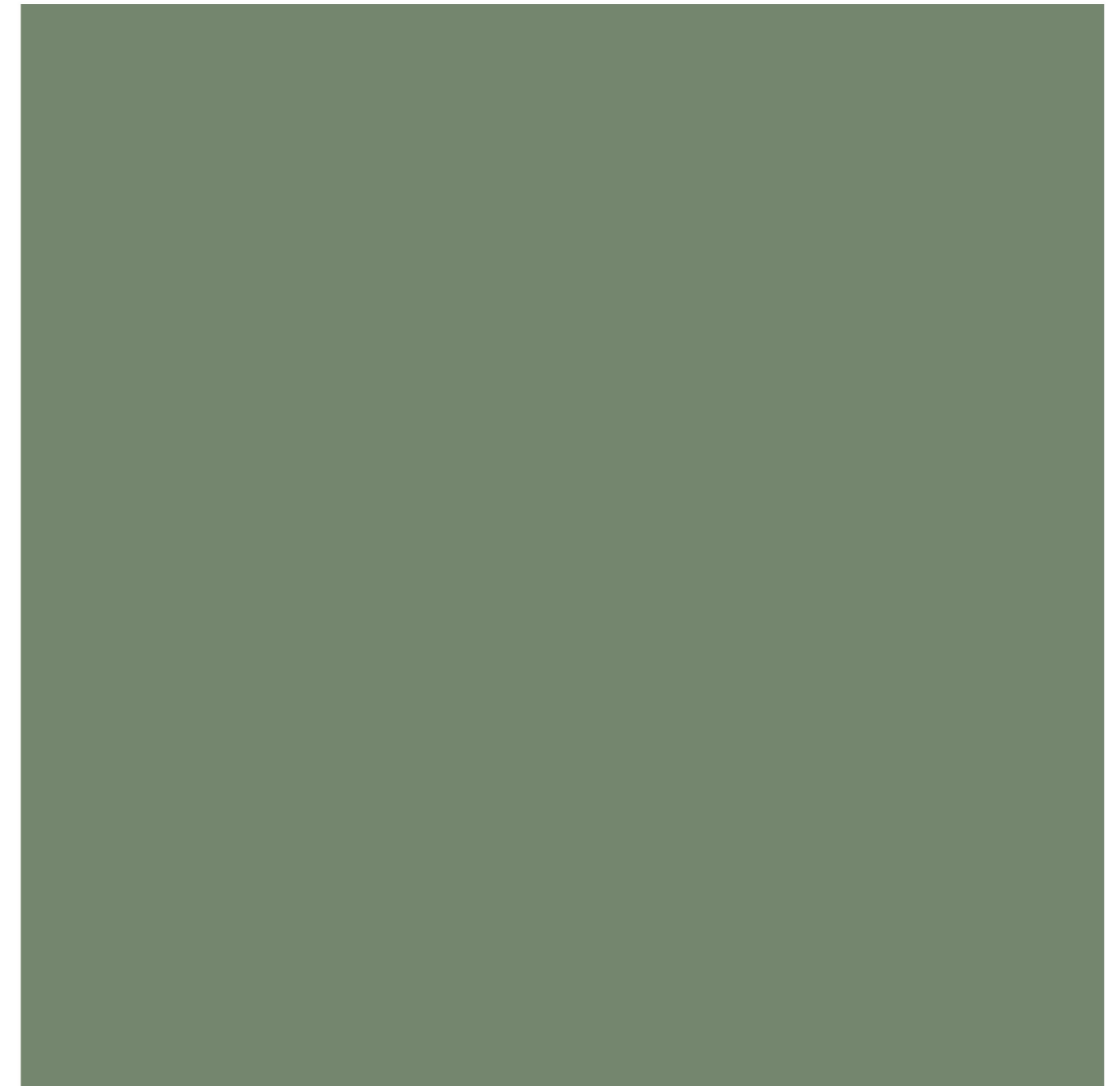




Size:  
**600X  
600 MM**

Thickness :  
**8.0** 

Finish :  
**MATT FINISH**



# GREY

MINIMUM  
3MM SPACE  
RECOMMEND

**Prism**  
collection

Size:  
**600X  
600 MM**

Thickness :  
**8.0** 

Finish :  
**MATT FINISH**





Size:  
**600X  
600 MM**

Thickness :  
**8.0** 

Finish :  
**MATT FINISH**



# LEMON

MINIMUM  
3MM SPACE  
RECOMMEND



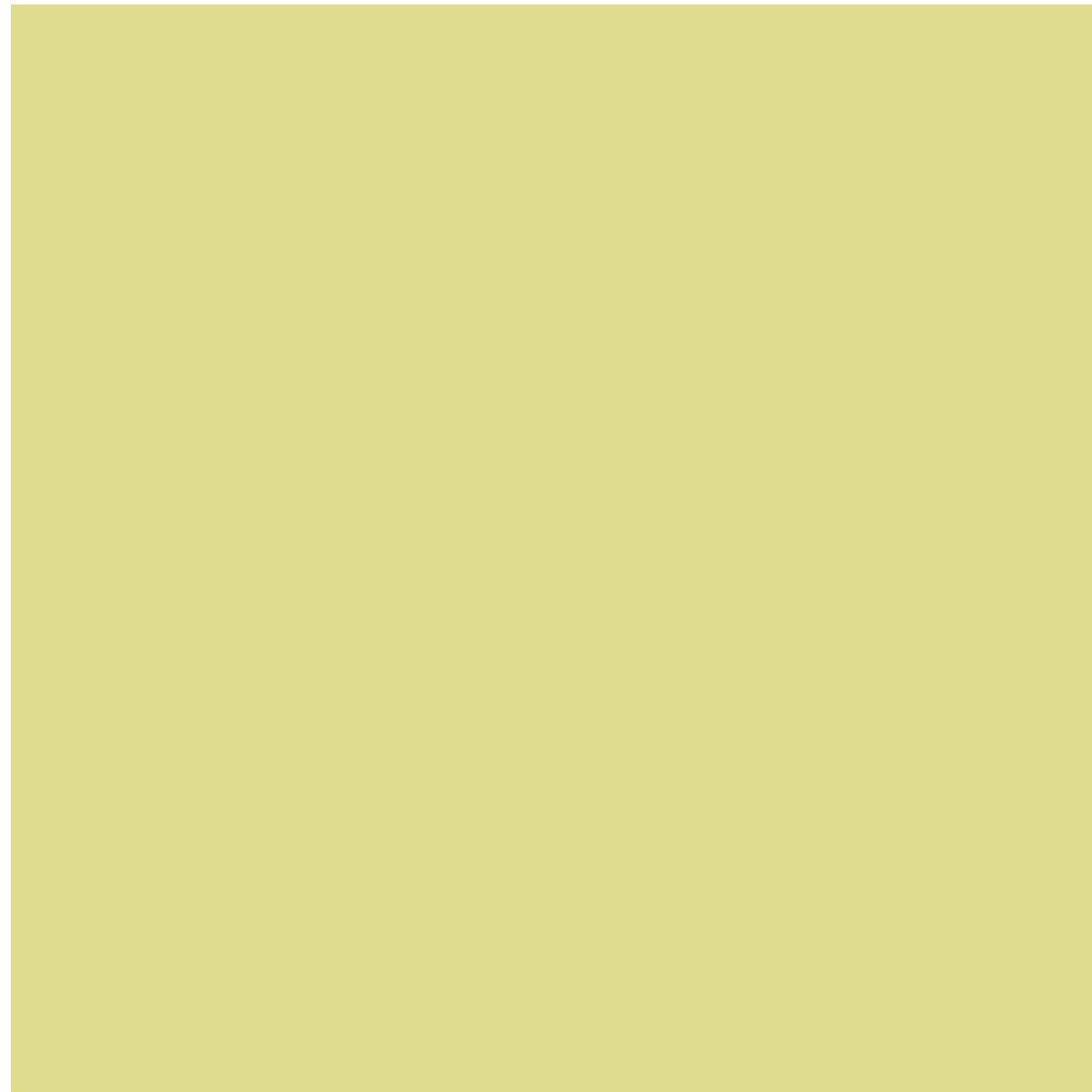
**Prism**  
collection

Size:  
**600X  
600 MM**

Thickness :

**8.0**

Finish :  
**MATT FINISH**



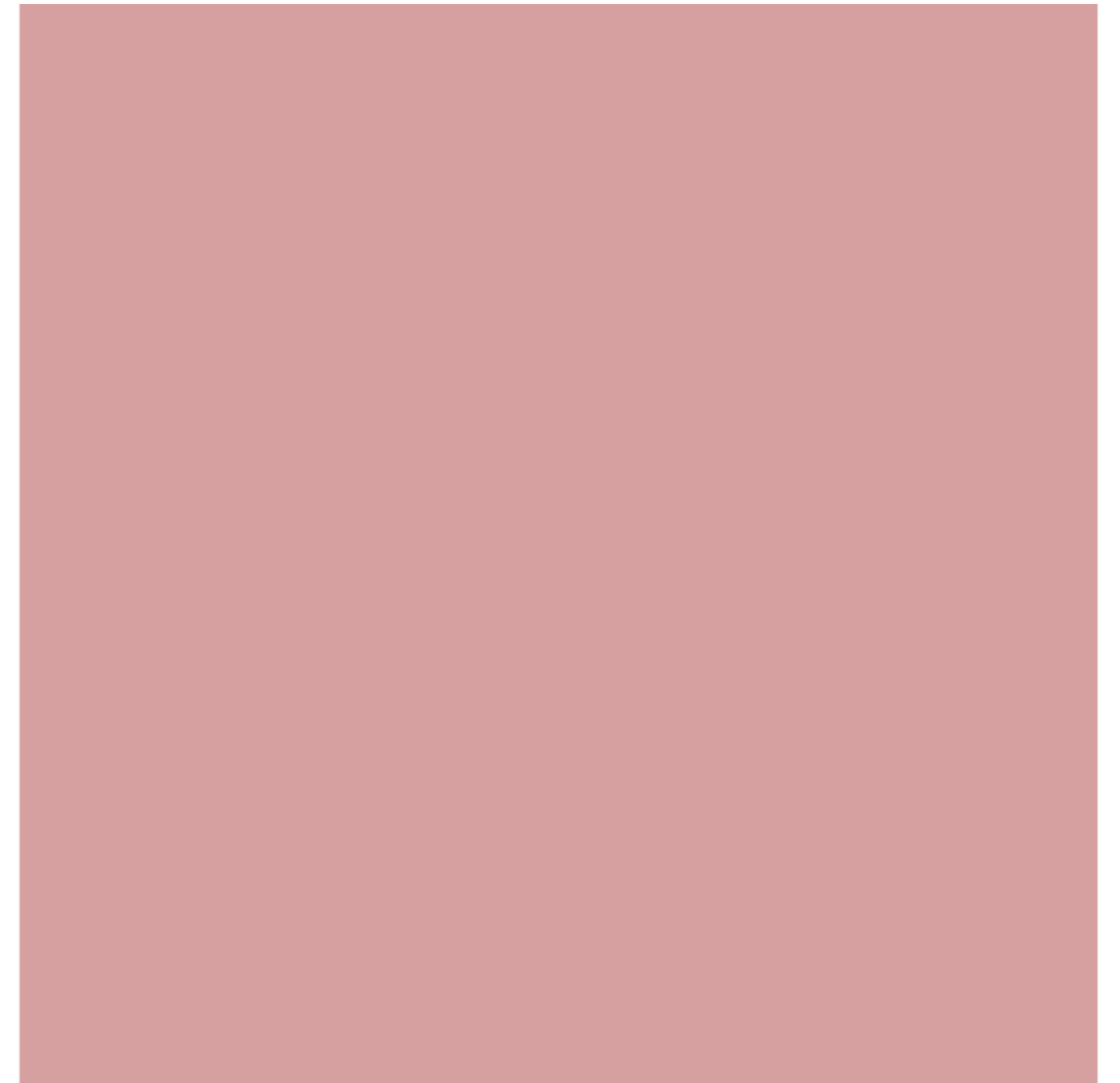




Size:  
**600X  
600 MM**

Thickness :  
**8.0**

Finish :  
**MATT FINISH**



# PISTACHIO

MINIMUM  
3MM SPACE  
RECOMMEND



**Prism**  
collection

Size:  
**600X  
600 MM**

Thickness :  
**8.0**

Finish :  
**MATT FINISH**

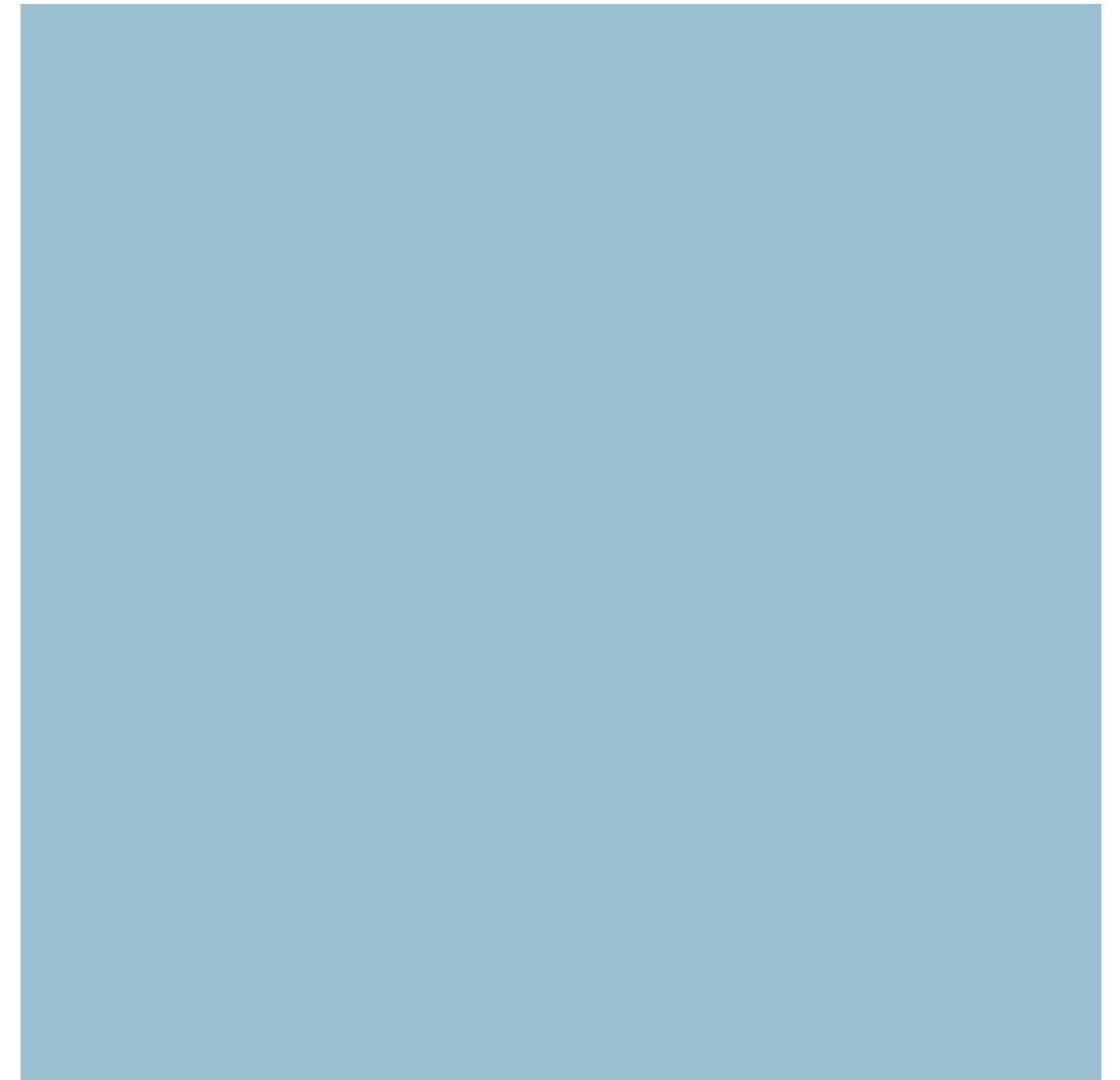




Size:  
**600X  
600 MM**

Thickness :  
**8.0**

Finish :  
**MATT FINISH**



# VIOLET

MINIMUM  
3MM SPACE  
RECOMMEND

**Prism**  
collection

Size:  
**600X  
600 MM**

Thickness :  
**8.0**

Finish :  
**MATT FINISH**



# TECHNOLOGY & AFFILIATIONS

HLT

KEDA

vidres

MODENA

SYSTEM  
Ceramics

## OUR CERTIFICATE

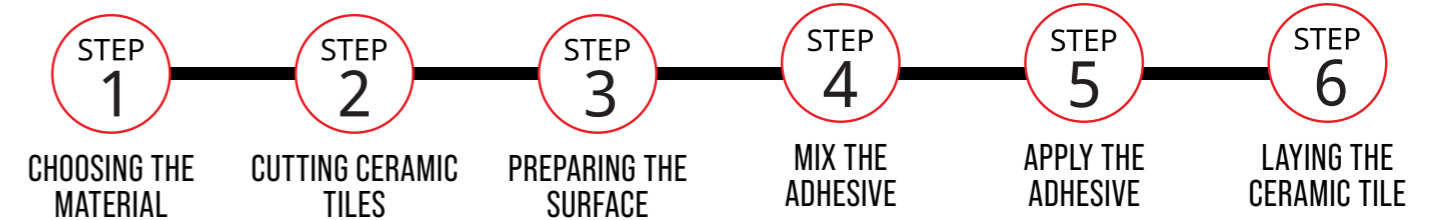
UK  
CA



CE



# TILES INSTALLATION



### Special Laying Instruction:

#### Tiles Spacers

We always recommend to use the Tile Spacer for laying of different tiles as per its type and size. Tile Spacer is specially designed to create a uniform gap between tiles, this results in proper alignment throughout the tiling area. It is available in different width sizes starting from 2mm width to 10 mm width.

### Features and Benefits:

- Spacers accommodate the movements due to thermal variations and different loads
- When filled with the right grout material, they can efficiently reduce the free water flow / leakage through the joints and also make the joints anti - fungal and anti - bacterial
- With spacers, we can create uniform designs and pattern
- Improved aesthetics and dimensional stability to the entire tile/ stone assembly
- It ensures longer life span of tile installation

## TECHNICAL SPECIFICATION

CHARACTERISTIC	STANDARD AS PER ISO-13006/ EN14411 GROUP Bla	TILES VALUE	TEST METHOD
<b>REGULATORY PROPERTIES</b>			
1) Deviation In Length & Width	±0.50%	±0.10%	ISO-10545-2
2) Deviation In Thickness	+5.00%	±2.00%	ISO-10545-2
3) Straightness Of Sides	±0.50%	±0.10%	ISO-10545-2
4) Rectangularity	±0.50%	±0.10%	ISO-10545-2
5) Surface Flatness	±0.50%	±0.10%	ISO-10545-2
6) Color Differences	Unaltered	No Change	ISO-10545-16
7) Glossiness	As Per Manufacturer	Min. 70%	Glossometer
<b>STRUCTURAL PROPERTIES</b>			
1) Water Absorption	≤0.50%	<0.05%	ISO-10545-3
2) Apparent Density	>2.00 gm/cc	>2.28 gm/cc	DIN 51082
<b>MASSIVE MECHANICAL PROPERTIES</b>			
1) Flexural Modulus Of Rupture	Min. 35N/mm <sup>2</sup>	Min. 40N/mm <sup>2</sup>	ISO-10545-4
2) Flexural Breaking Strength	Min. 1300 N	Min. 2000 N	ISO-10545-4
3) Impact Resistance	As Per Manufacturer	Min. 0.55	ISO-10545-5
<b>SURFACE MECHANICAL PROPERTIES</b>			
1) Deep Abrasion Resistance	Max. 175mm <sup>3</sup>	Max. 132mm <sup>3</sup>	ISO-10545-6
2) Moh's Hardness	Min. 6	8*	EN101
<b>THERMO HYGROMETRIC PROPERTIES</b>			
1) Frost Resistance	No Damage	Frost Proof	ISO-10545-12
2) Thermal Shock Resistance	No Damage	No Damage	ISO-10545-9
3) Moisture Expansion	Nil	Nil	ISO-10545-10
4) Thermal Expansion	Max 9.0x10 <sup>6</sup>	Max 6.5x10 <sup>-</sup>	ISO-10545-8
<b>CHEMICAL PROPERTIES</b>			
1) Chemical Resistance	No Damage	No Damage	ISO-10545-13
2) Stain Resistance	Resistant	Resistant	ISO-10545-14
<b>SAFETY PROPERTIES</b>			
1) Slip Resistance(friction Co Efficient)	>0.40	>0.40	ISO-10545-17

## PACKING DETAIL

Size	600x600mm
Thickness (approx.)	8 mm
Pieces / Box	4 pcs.
Area / Box	1.44 sq.mtr.
Wt./Box (approx.)	26-27 Kgs.